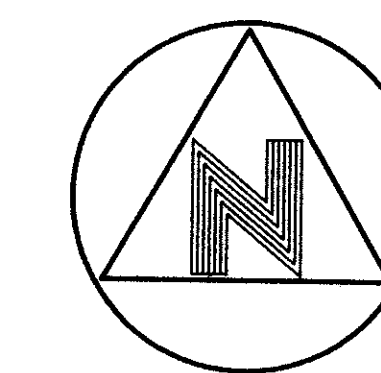
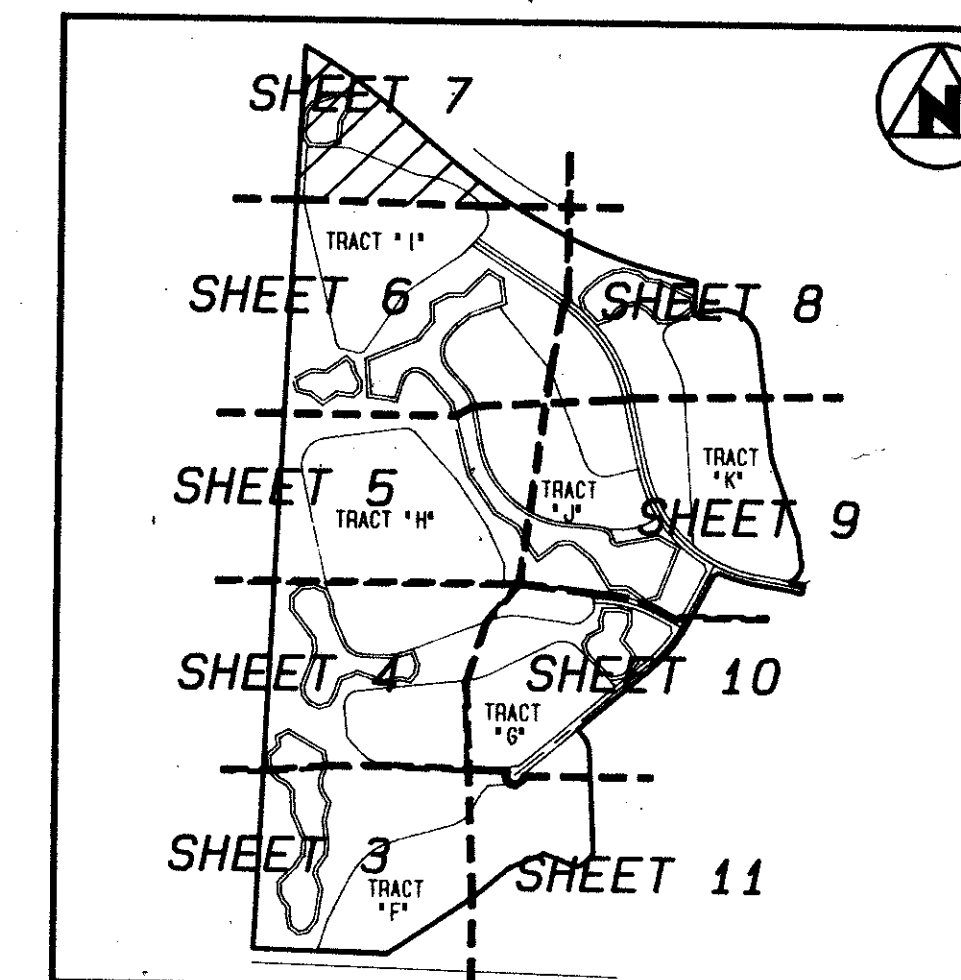


- Wycliffe Plat Three -

LYING IN SECTION 25, TOWNSHIP 44 SOUTH, RANGE 41 EAST, PALM BEACH COUNTY, FLORIDA

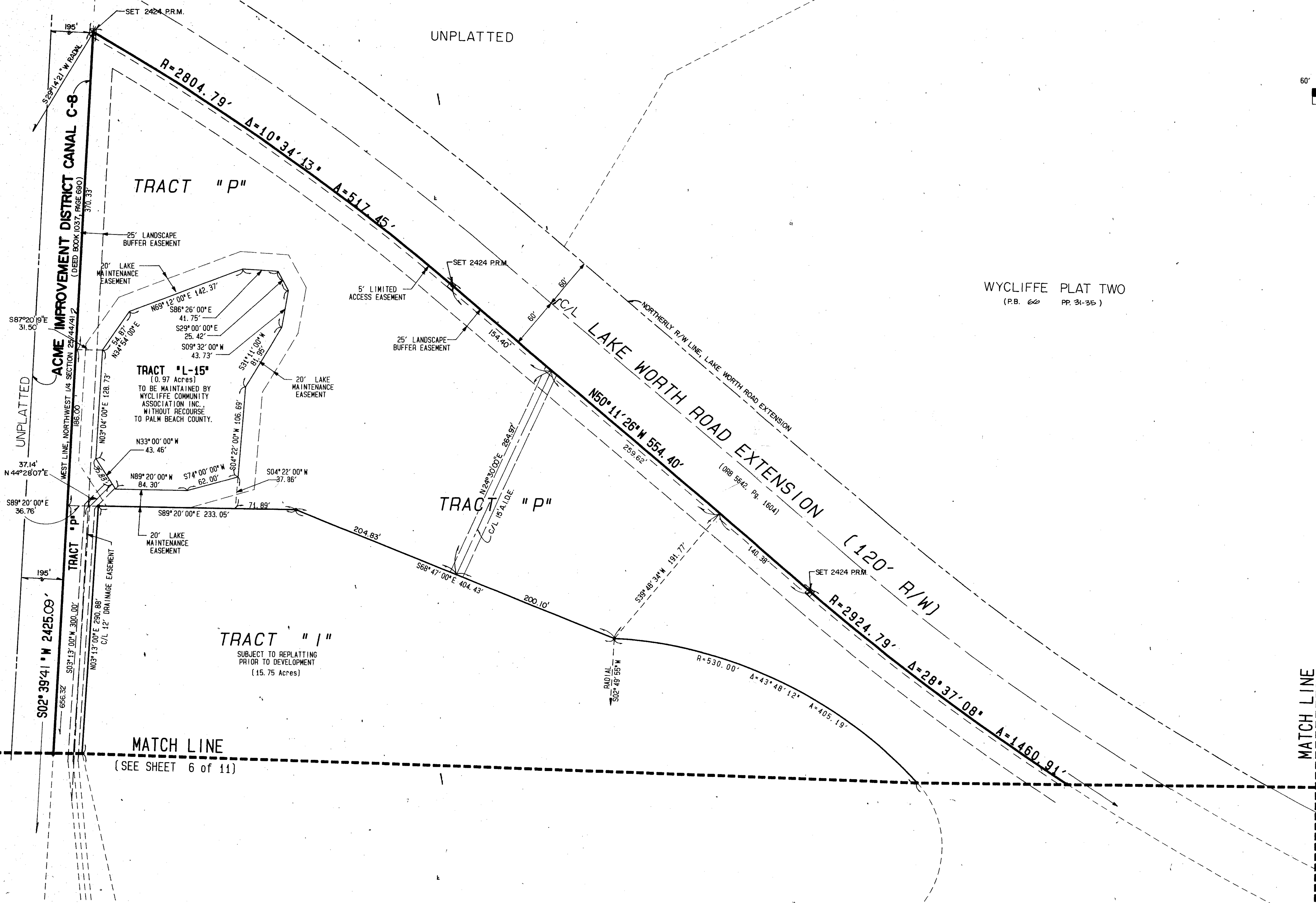


GRAPHIC SCALE



KEY MAP (N.T.S.)

WYCLIFFE PLAT TWO (P.B. 60 PP. 31-35)



LEGEND:

- A.I.D.E. INDICATES ACME IMPROVEMENT DISTRICT EASEMENT
- C/L INDICATES CENTERLINE
- O.R.B. INDICATES OFFICIAL RECORDS BOOK
- P.C.P. ⊙ INDICATES A PERMANENT CONTROL POINT
- Pg. INDICATES PAGE
- Pg. INDICATES PAGE THROUGH PAGE
- P.R.M. □ INDICATES PERMANENT REFERENCE MONUMENT
- R/W INDICATES RIGHT OF WAY
- SEC. INDICATES SECTION
- MON. INDICATES MONUMENT
- P.B. INDICATES PLAT BOOK

FLOOD ZONE B
 FLOOD MAP # 1000
 ZONING RTS
 QUAD # 63
 ZIP CODE 33467
 PUD NAME same
 12514141

TAZ = 796

THIS INSTRUMENT WAS PREPARED BY WILLIAM R. VAN CAMPEN, R.L.S., IN AND FOR THE OFFICES OF BENCH MARK LAND SURVEYING & MAPPING, INC., 4152 WEST BLUE HERON BOULEVARD, SUITE 121, RIVIERA BEACH, FLORIDA

BENCH MARK
 LAND SURVEYING & MAPPING, INC.
 RIVIERA BEACH, FLORIDA WEST PALM BEACH, FLORIDA
 (407) 848-2102 (407) 733-9234

Record Plat
Wycliffe Plat Three

0520-009